

Early Learning Alliance

# Data Report

Quarter 4, 2023



**EARLY LEARNING**  
ALLIANCE

# Purpose

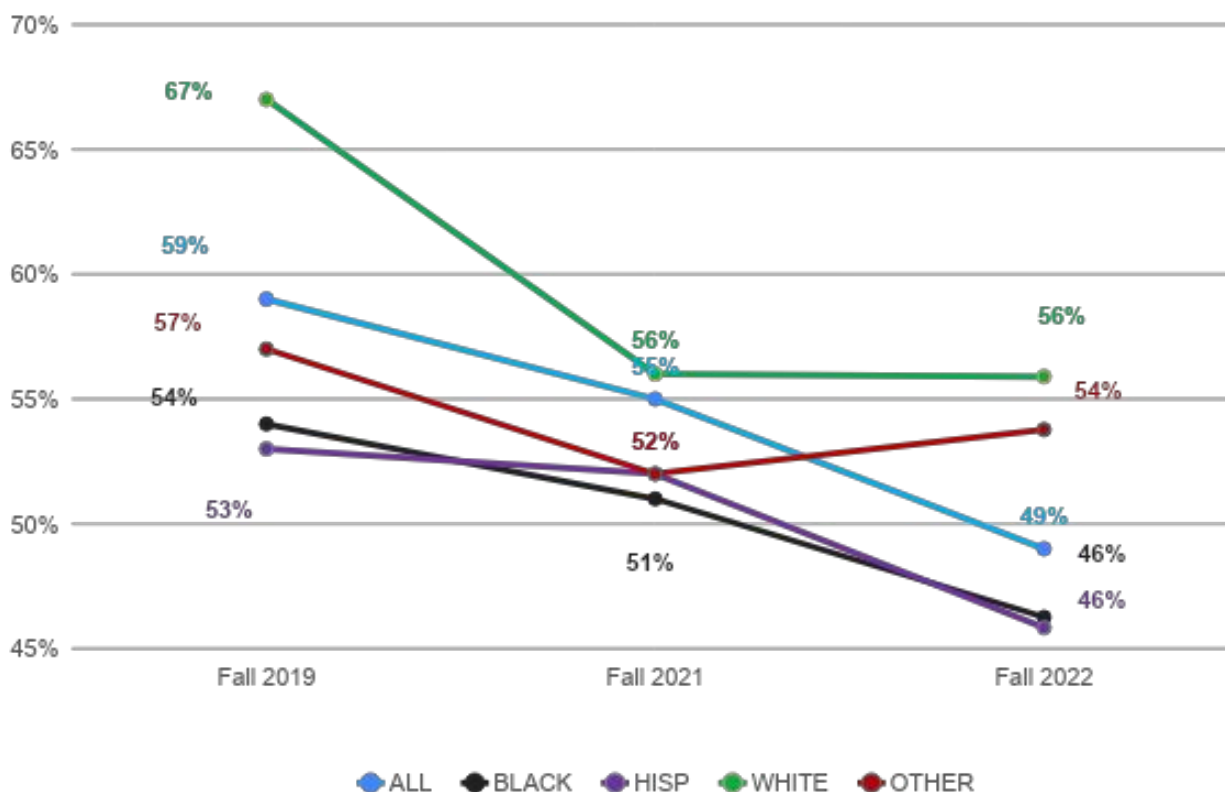
The current report provides data for key aspects of early care and learning in Tarrant County. The report includes the following:

- Kindergarten Readiness and 3<sup>rd</sup> Grade Reading
- Number and Type of Early Childhood Programs
- Quality of Early Childhood Programs and Access to Quality Care
- Early Childhood Professionals' Use of the Workforce Registry

Where possible, the data are disaggregated by race and ethnicity.

# 01 Kindergarten Readiness

## PERCENT OF TARRANT COUNTY CHILDREN RATED AS KINDERGARTEN READY (by race/ethnicity)



The percentage of Tarrant County children rated as Kindergarten Ready has decreased for all groups since 2019. Of interest is the larger decrease for White children. However, the percentages for Black and Hispanic children continue to be the lowest (46%).

Source: [Kindergarten Programs & Readiness | TPEIR \(texaseducationinfo.org\)](https://www.texaseducationinfo.org/) data report of student performance on one of several kindergarten assessment tools on the Texas Education Agency Commissioner's List of Approved Assessments.

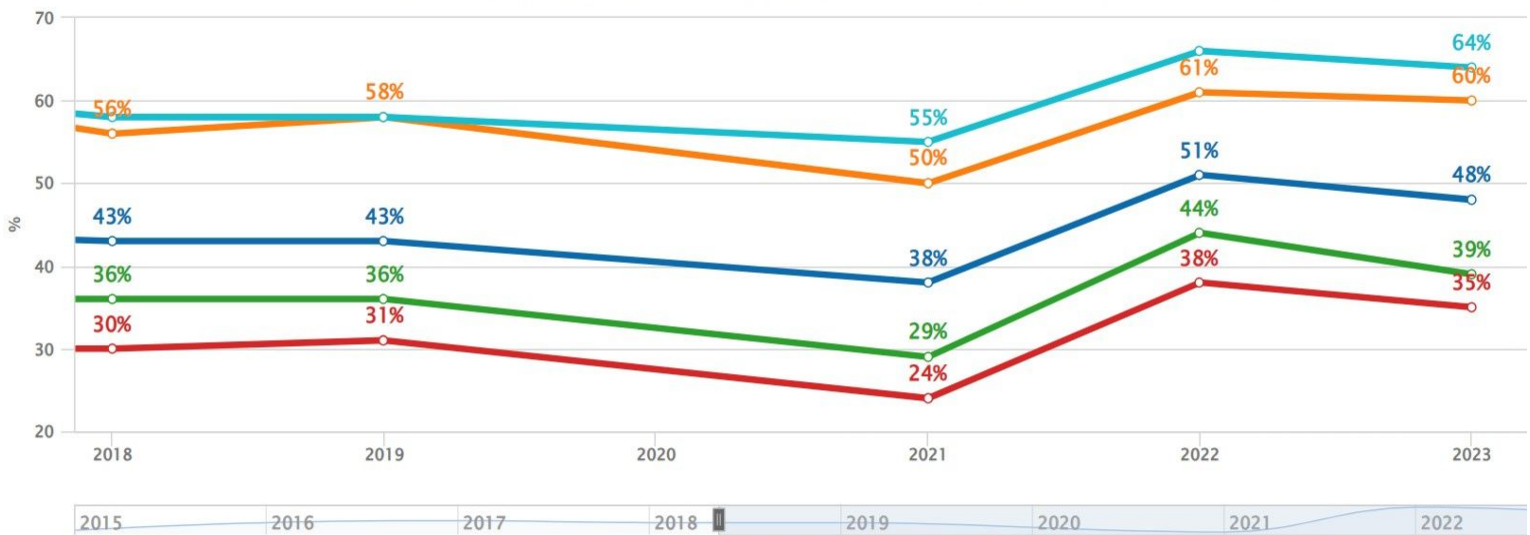
**NOTES:** Fall 2020 data are not included because, due to the COVID-19 pandemic, many Tarrant County school districts did not submit data. Fall 2023 data are not yet available.

# 3rd Grade Reading 02

## PERCENT OF TARRANT COUNTY 3<sup>RD</sup> GRADE STUDENTS READING AT GRADE LEVEL (2018-2023, by race/ethnicity)

% of All 3rd grade children in Tarrant County on grade level in Reading - Comparison

Data Source: TEA STAAR data for all Tarrant County Schools - % at Recommended Level. CLICK ON COMPARISON TO SEE ETHNICITY COMPARISONS.



- [3GR] % of All 3rd grade children in Tarrant County on grade level in Reading
- [3GR] % of Other 3rd grade children on grade level in Reading
- [3GR] % of White 3rd grade children on grade level in Reading
- [3GR] % of Hispanic 3rd grade children on grade level in Reading
- [3GR] % of Afr. Amer. 3rd grade children on grade level in Reading

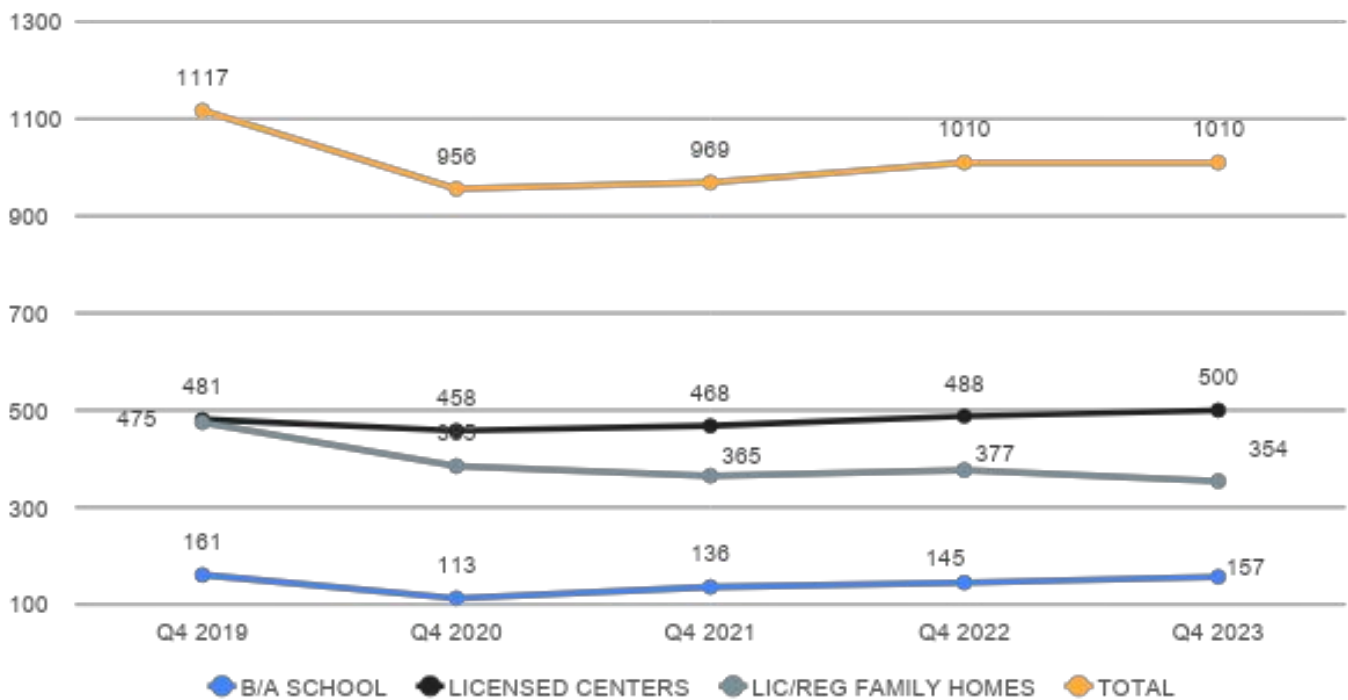
The percentage of all 3<sup>rd</sup> grade students reading on grade level decreased by 3 percentage points from 2022 to 2023. The decrease was similar for White and Black students but greater for Hispanic students (5 percentage points).

With a performance gap of 25 to 29 percentage points, the percentage of third graders reading on grade-level continues to be lowest for Black and Hispanic students, as compared to White students and students of other races.

**NOTES:** These data are from the State of Texas Assessment of Academic Readiness (STAAR), administered in all Texas public and charter schools in the Spring of each school year. Due to the COVID-19 pandemic, the assessment was not administered in Spring 2020.

# 03 Access to Early Childhood Programs

## NUMBER OF TARRANT COUNTY LICENSED CHILD CARE & EDUCATION PROGRAMS BY PROGRAM SETTING (End of Year 2019-2023)

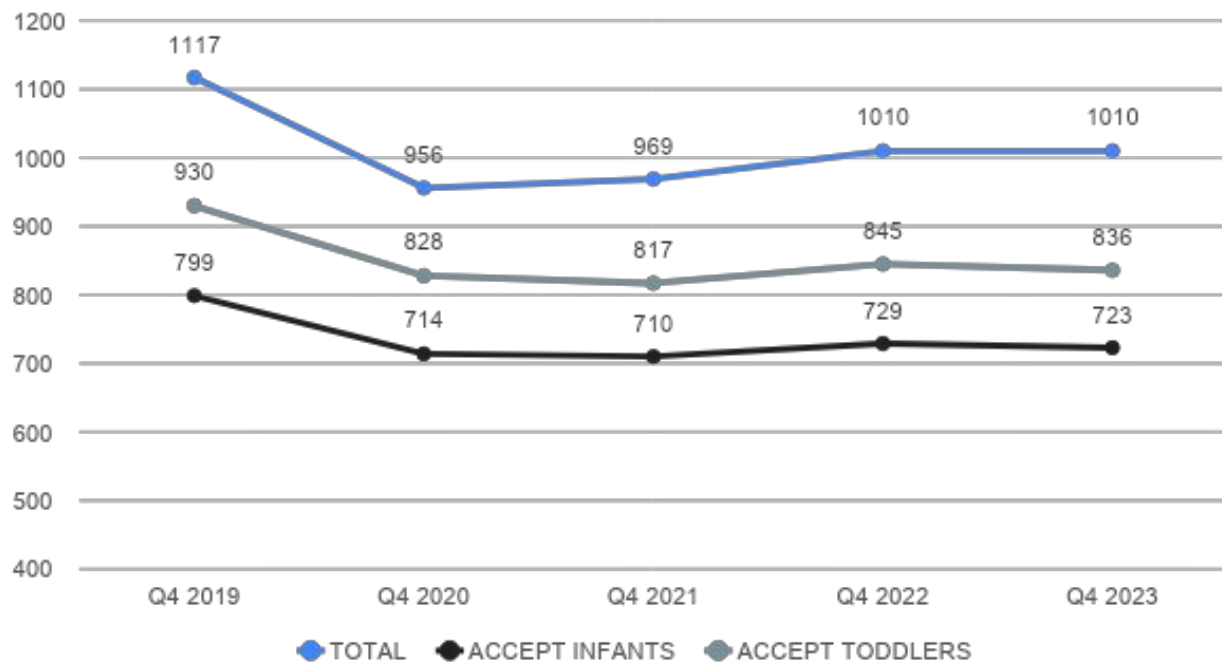


Overall, the number of licensed or registered early childhood programs decreased from the end of 2019 through 2023, with approximately 100 fewer programs now than in 2019. The number of licensed centers shows a steady increase since 2020 but the number of licensed or registered family home continues to decrease.

**SOURCE:** DFPS - Texas Child Care Licensing (CCL)

# 04 Access to Early Childhood Programs (cont.)

**NUMBER OF TARRANT COUNTY EARLY CARE & EDUCATION PROGRAMS FOR *INFANTS AND TODDLERS* (End of Year 2019-2023)**

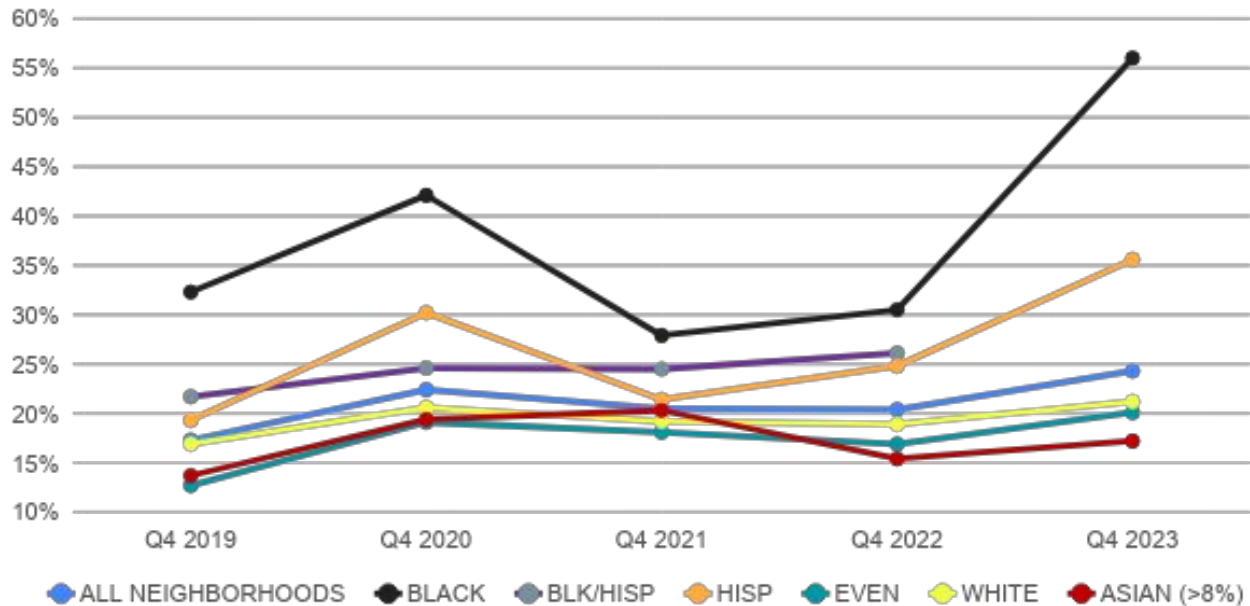


As with the overall trends, the number of child care programs in Tarrant County that accept infants and toddlers has decreased since the end of 2019. After a slight increase from 2021 to 2022, the numbers decreased again from 2022 to 2023.

**SOURCE:** DFPS - Texas Child Care Licensing (CCL)

# Quality Care & Education 05

## PERCENTAGE OF LICENSED CHILD CARE PROGRAMS IN TARRANT COUNTY WITH A QUALITY RATING (End of Year 2019-2023)



NEIGHBORHOOD RACE/ETHNICITY	# of All Programs (2023)	Q4 2019	Q4 2020	Q4 2021	Q4 2022	Q4 2023
ALL NEIGHBORHOODS	1010	17%	22%	21%	20%	24%
BLACK	30	32%	42%	28%	31%	56%
BLK/HISP	0	22%	25%	25%	26%	
HISP	160	19%	30%	21%	25%	36%
EVEN	42	13%	19%	18%	17%	20%
WHITE	130	17%	21%	19%	19%	21%
ASIAN (>8%)	44	14%	19%	20%	15%	17%

The percentage of child care programs with a quality rating continues to increase across all neighborhoods in Tarrant County. During 2023, the greatest increase occurred in neighborhoods where the majority of residents were Black or Hispanic.

Neighborhoods with high Asian populations continue to have the lowest percentage of child care programs with quality ratings.

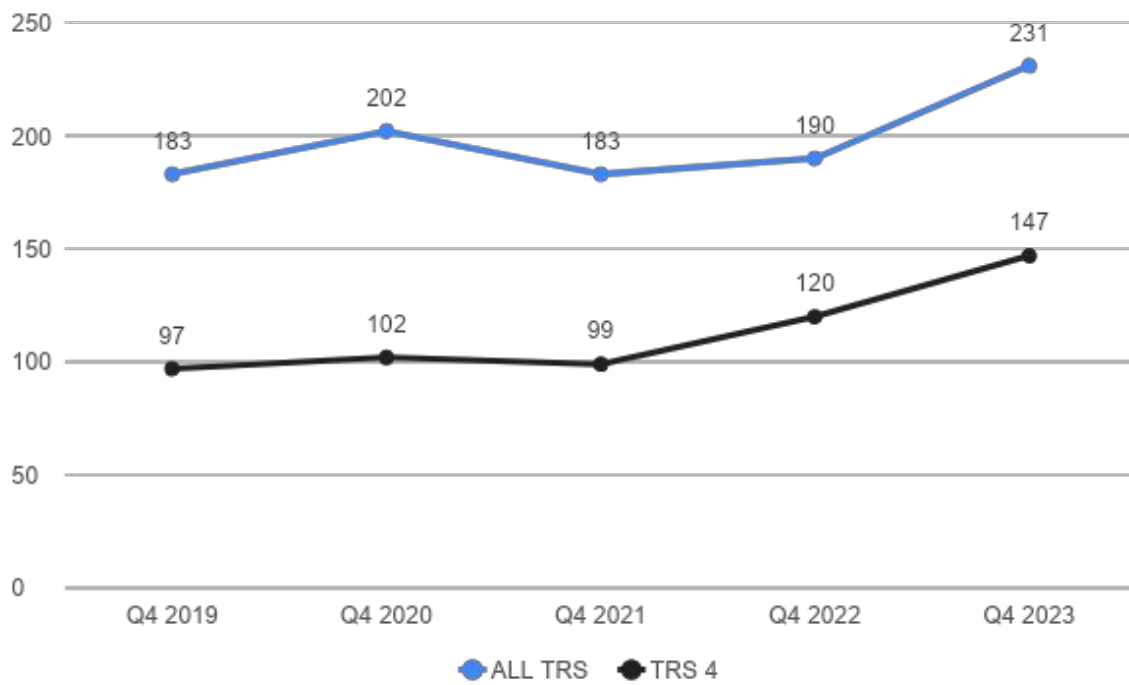
**NOTES:** Quality ratings include TRS, NAEYC, NAC, and AMS or AMI Certification.

Neighborhood race/ethnicity designations in 2023 are based on 2022 census data. There are no longer any zip codes in Tarrant County that meet the criteria for Black/Hispanic neighborhoods.

Asian neighborhoods also have one of the other race/ethnicity designations.

# 06 Quality Care & Education (cont.)

## NUMBER OF ALL ELIGIBLE TARRANT COUNTY PROGRAMS WITH A TRS RATING (End of Year 2019-2023)



The number of eligible Tarrant County programs with a Texas Rising Star (TRS) rating *and* the number with a rating of 4 continue to increase from year to year. Of note is the large increase in the numbers from 2022 to 2023 with 41 additional TRS programs and 27 additional programs with a TRS rating of 4.

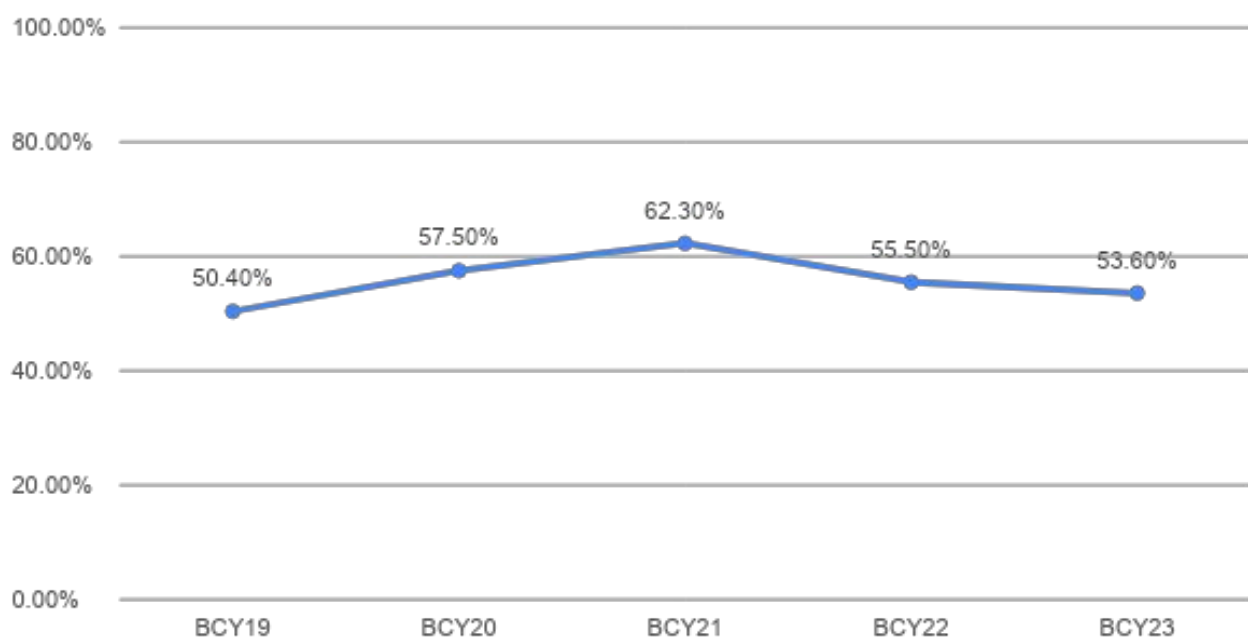
**NOTES:** *Data can be disaggregated by child care program setting upon request.*



# Quality Care & Education (cont.)

# 07

## PERCENT OF CCMS SCHOLARSHIP CHILDREN IN TARRANT COUNTY ENROLLED IN A PROGRAM WITH A TRS RATING Board Contract Years (BCY)<sup>1</sup> 2019-2023

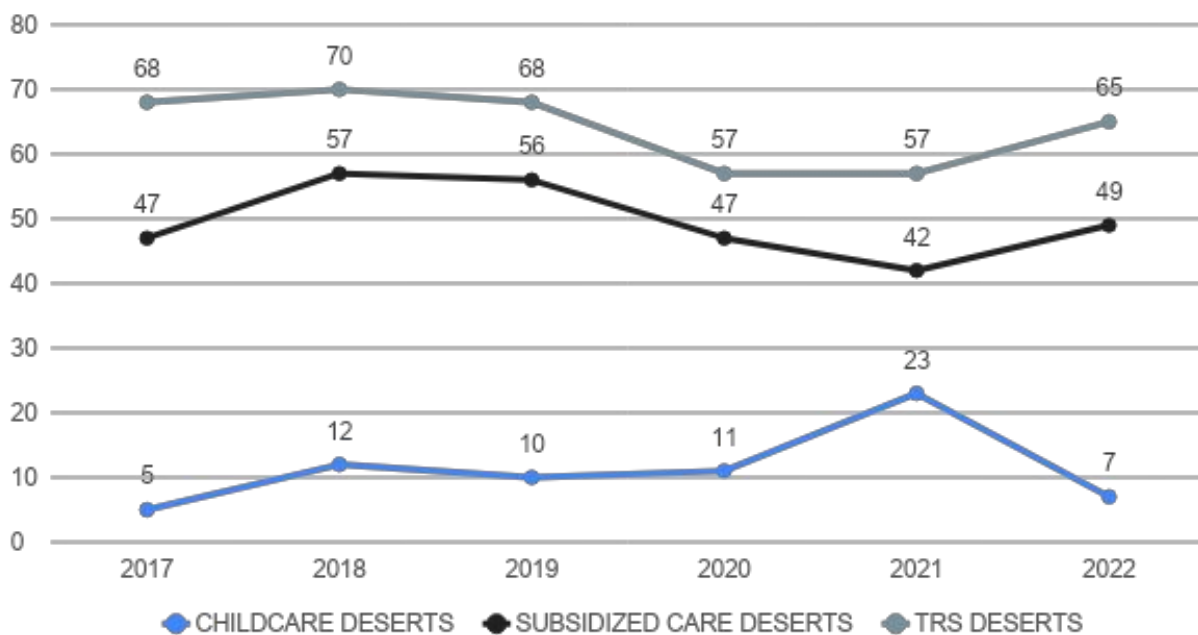


Over half of Tarrant County children who utilize a CCMS scholarship are enrolled in a TRS program. Following a steady increase from BCY 2019 to BCY 2021, the percentages decreased by 9 percentage points.

<sup>1</sup>Data source: [Child Care by the Numbers - Texas Workforce Commission](#). Annual data are based on the board contract year (BCY) of October 1st through September 30th. The percentages are based on the average number of children served per day.

# 08 Quality Care & Education (cont.)

**NUMBER OF TARRANT COUNTY NEIGHBORHOODS (zip codes) DESIGNATED AS CHILD CARE DESERTS (2017-2022)**

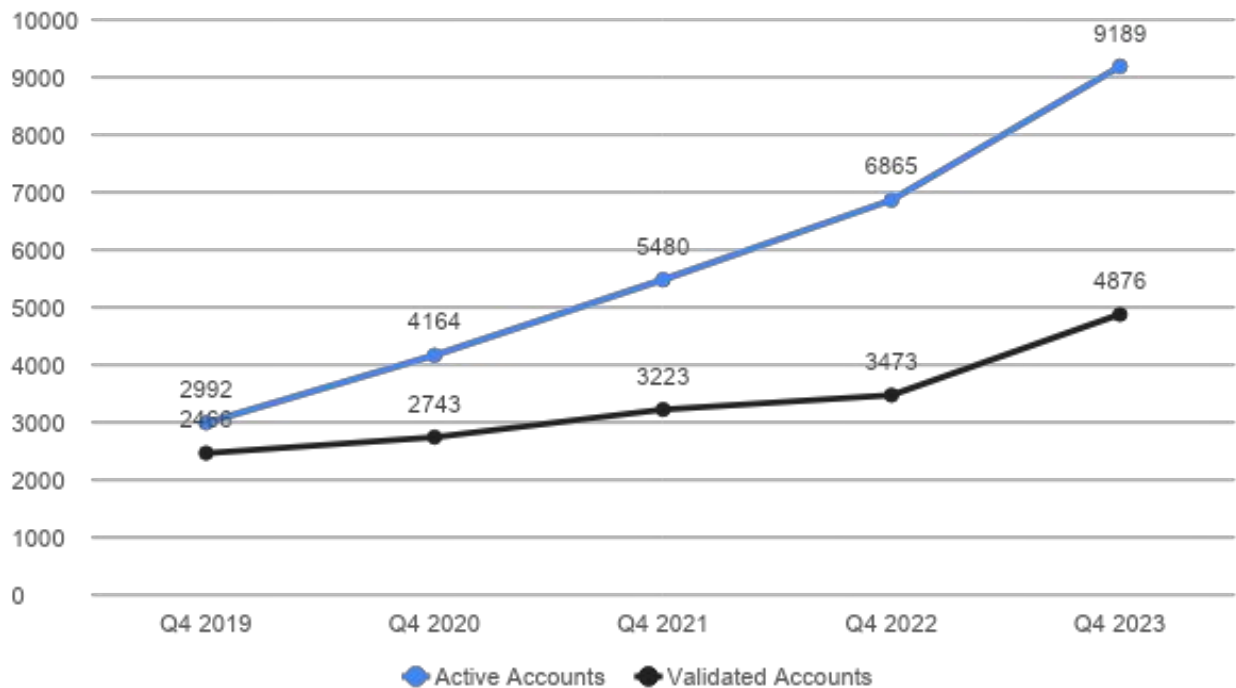


Child care deserts are zip code areas with insufficient numbers of child care seats to serve children ages 0-5 with working parents. In Tarrant County, there are 7 child care deserts overall. However, there are 49 zip codes with insufficient space to serve children of low-income working parents (subsidized deserts) and 65 zip codes with insufficient seats in *quality* child care centers (TRS deserts).

Source: [Child Care Deserts Landing Page - CHILDREN AT RISK](#)

# 09 Workforce Registry

## NUMBER OF ACTIVE AND VALIDATED REGISTRY USERS IN TARRANT COUNTY (End of Year 2019 – 2023)



The number of early care and education professionals in Tarrant County with active and validated registry accounts continues to increase.



**EARLY LEARNING**  
ALLIANCE

[earlylearningalliance.org](http://earlylearningalliance.org)    [ELA@earlylearningntx.org](mailto:ELA@earlylearningntx.org)