

Early Learning Alliance

Data Report

Quarter 2, 2023



EARLY LEARNING
ALLIANCE

Purpose

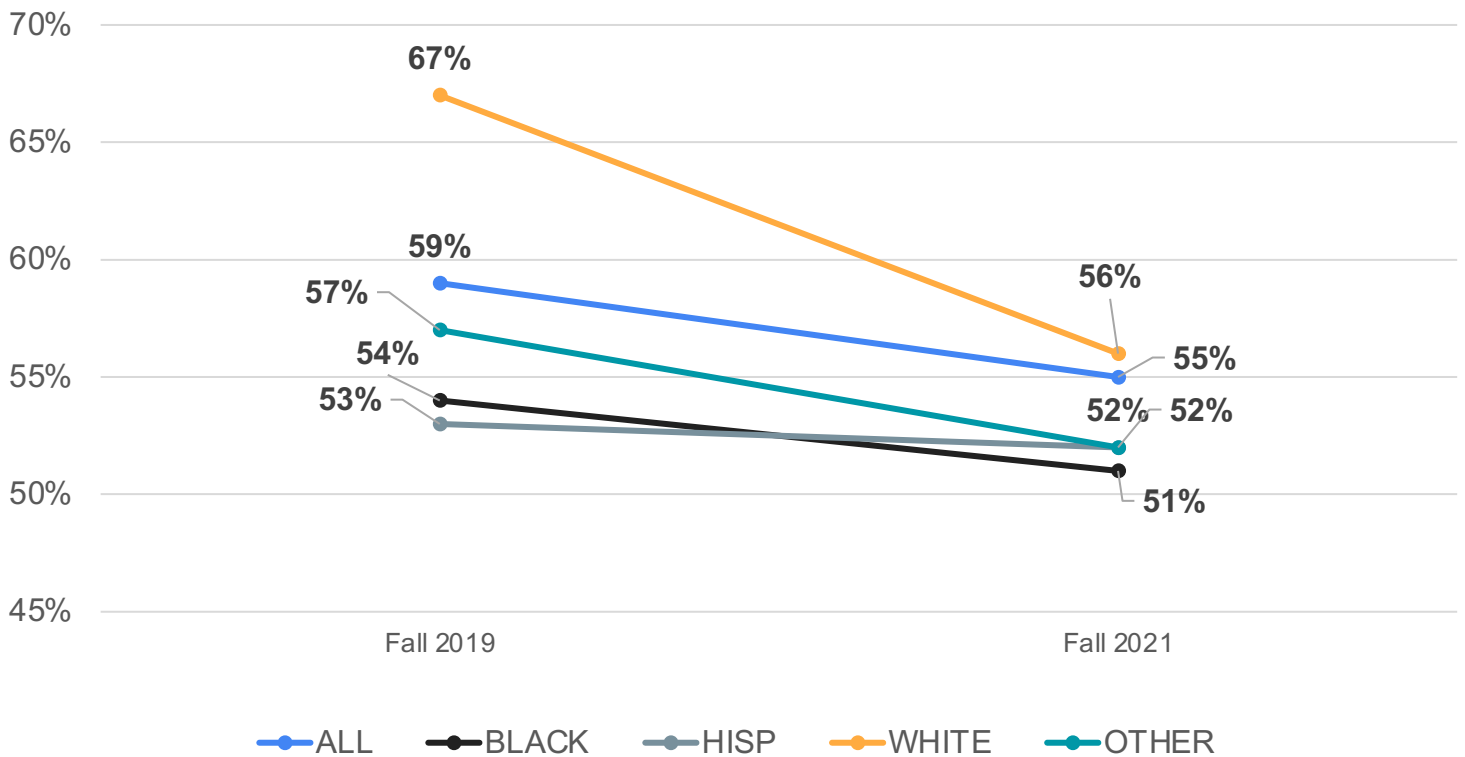
The current report provides Quarter 2, 2023 data for key aspects of early care and learning in Tarrant County. The report includes the following:

- Kindergarten Readiness and 3rd Grade Reading
- Number and Type of Early Childhood Programs
- Quality of Early Childhood Programs and Access to Quality Care
- Early Childhood Professionals' Use of the Workforce Registry
- Developmental Screening, and
- Families' Use of the HMG NTX Call Center

To show trends, the report also includes data from prior years.

01 Kindergarten Readiness

PERCENT OF TARRANT COUNTY CHILDREN RATED AS KINDERGARTEN READY (by race/ethnicity)



In Fall 2021, overall, 55% of Tarrant County children were rated as kindergarten ready on a Texas Education Agency approved assessment.

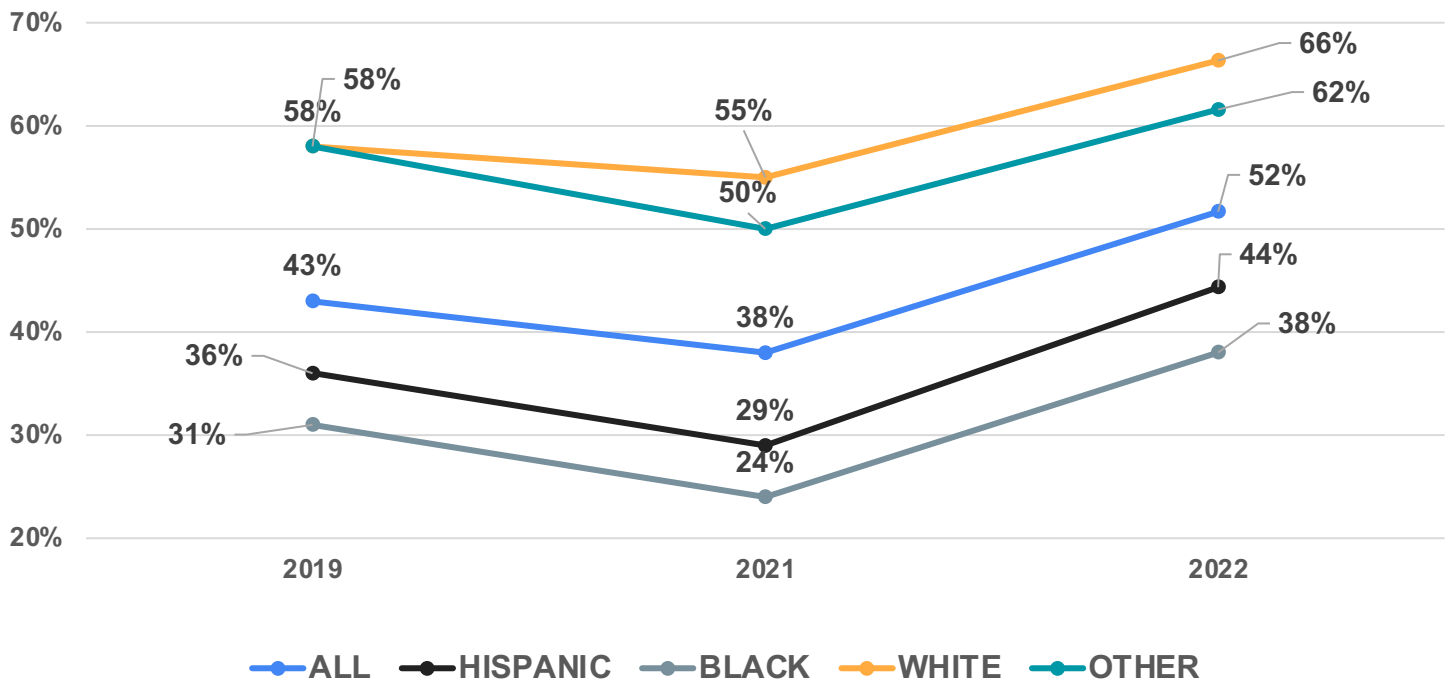
The ratings decreased for all groups of children and were lowest for Black and Hispanic children.

NOTES: Fall 2020 data are not included because, due to the COVID-19 pandemic, many Tarrant County school districts did not submit data. Fall 2022 data are not yet available.

3rd Grade Reading

02

PERCENT OF TARRANT COUNTY 3RD GRADE STUDENTS READING AT GRADE LEVEL (by race/ethnicity)



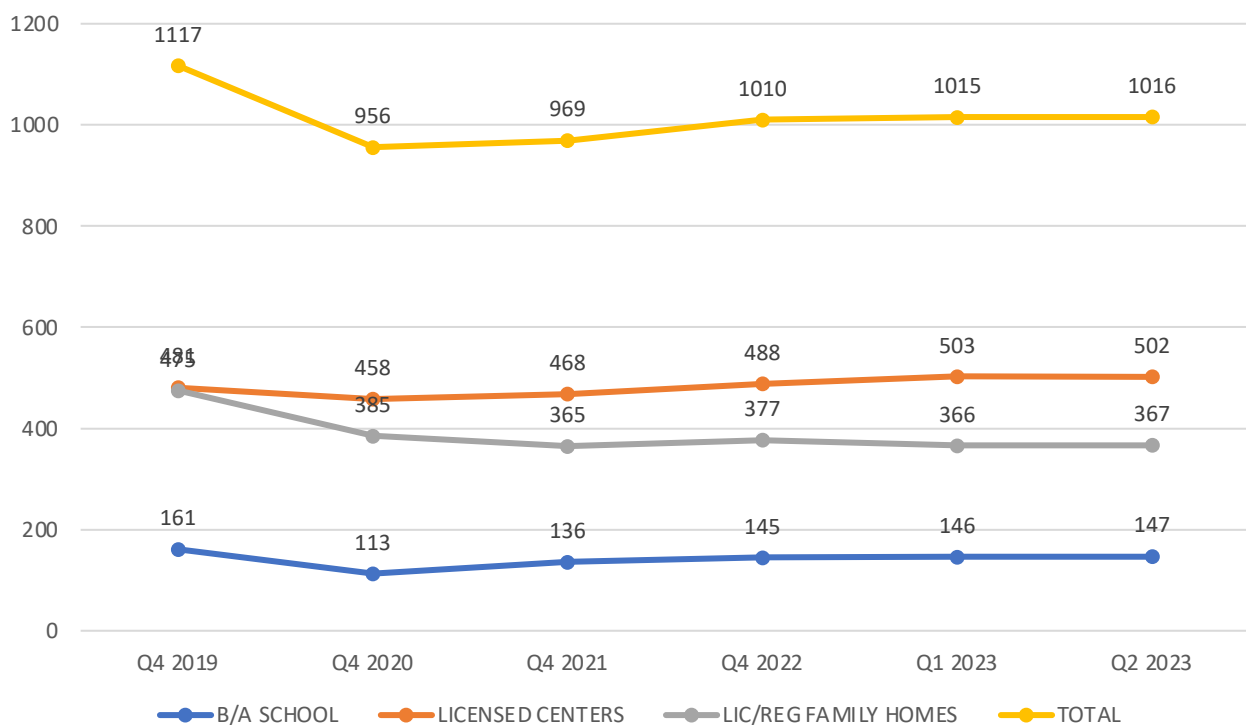
In the Spring of 2022, just over half (52%) of third graders in Tarrant County were reading on grade level. The percent of third graders in each racial/ethnic group reading on grade level increased from Spring 2021 to Spring 2022.

The percent of third graders reading on grade-level continues to be lowest for Black and Hispanic students, as compared to White students and students of other races.

NOTES: These data are from the State of Texas Assessment of Academic Readiness (STAAR), administered in all Texas public and charter schools in the Spring of each school year. Due to the COVID-19 pandemic, the assessment was not administered in Spring 2020. Spring 2023 data is not yet available.

03 Access to Early Childhood Programs

NUMBER OF TARRANT COUNTY LICENSED CHILD CARE & EDUCATION PROGRAMS BY PROGRAM SETTING (Q1 and Q2 2023 and 4 Prior Years)



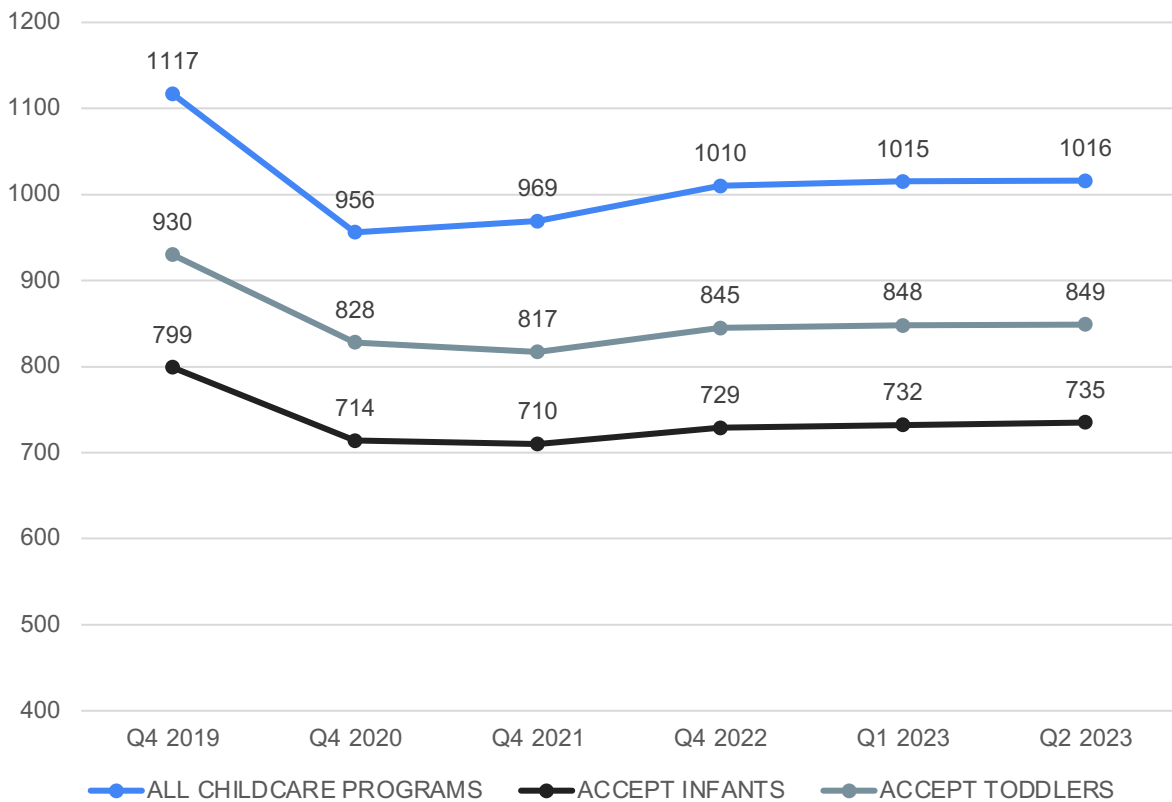
Overall, the number of licensed or registered early childhood programs decreased from the end of 2019 through 2022, with approximately 100 fewer programs now than in 2019.

The largest decrease in programs occurred for licensed/registered family homes.

SOURCE: [DFPS - Texas Child Care Licensing \(CCL\)](#)

04 Access to Early Childhood Programs (cont.)

NUMBER OF TARRANT COUNTY EARLY CARE & EDUCATION PROGRAMS FOR *INFANTS AND TODDLERS* (Q1 and Q2 2023 and 4 Prior Years)

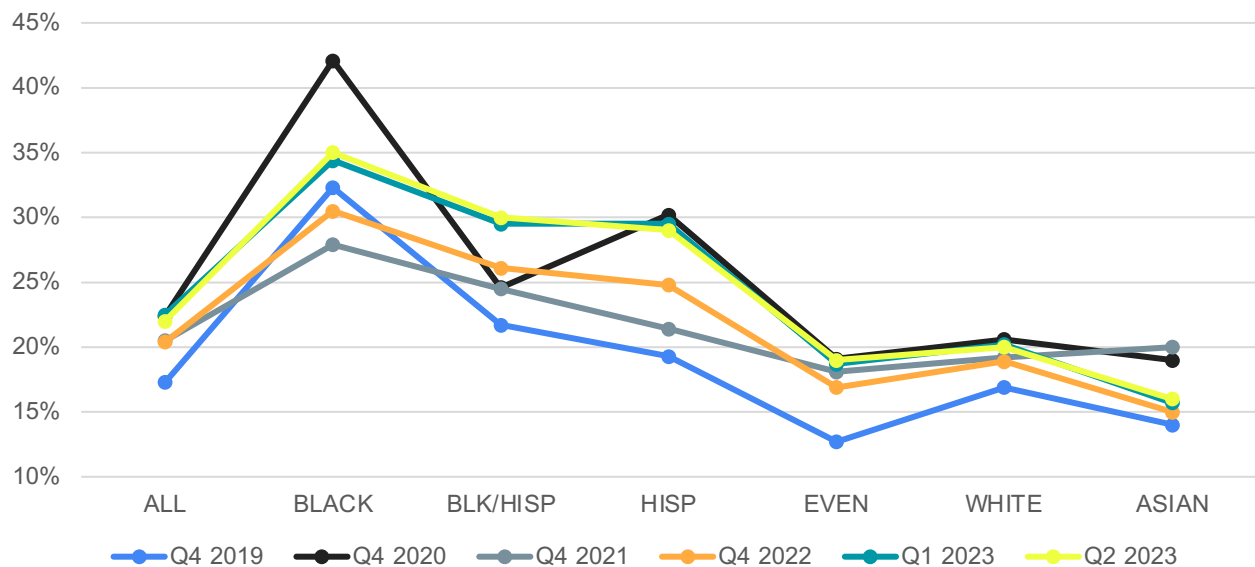


As with the overall trends, the number of child care programs in Tarrant County that accept infants and toddlers has decreased since the end of 2019 and show a slight increase from Q1 to Q2 2023.

SOURCE: [DFPS - Texas Child Care Licensing \(CCL\)](#)

Quality Care & Education 05

PERCENT OF LICENSED CHILD CARE PROGRAMS IN TARRANT COUNTY WITH A QUALITY RATING (Q1 & Q2 2023 & 4 Prior Years)



NEIGHBORHOOD ETHNICITY	Q4 2019	Q4 2020	Q4 2021	Q4 2022	Q1 2023	Q2 2023
ALL NEIGHBORHOODS	17%	22%	21%	20%	23%	22%
BLACK	32%	42%	28%	31%	34%	35%
BLK/HISP	22%	25%	25%	26%	30%	30%
HISP	19%	30%	21%	25%	30%	29%
EVEN	13%	19%	18%	17%	19%	19%
WHITE	17%	21%	19%	19%	20%	20%
ASIAN (>8%)	14%	19%	20%	15%	16%	16%

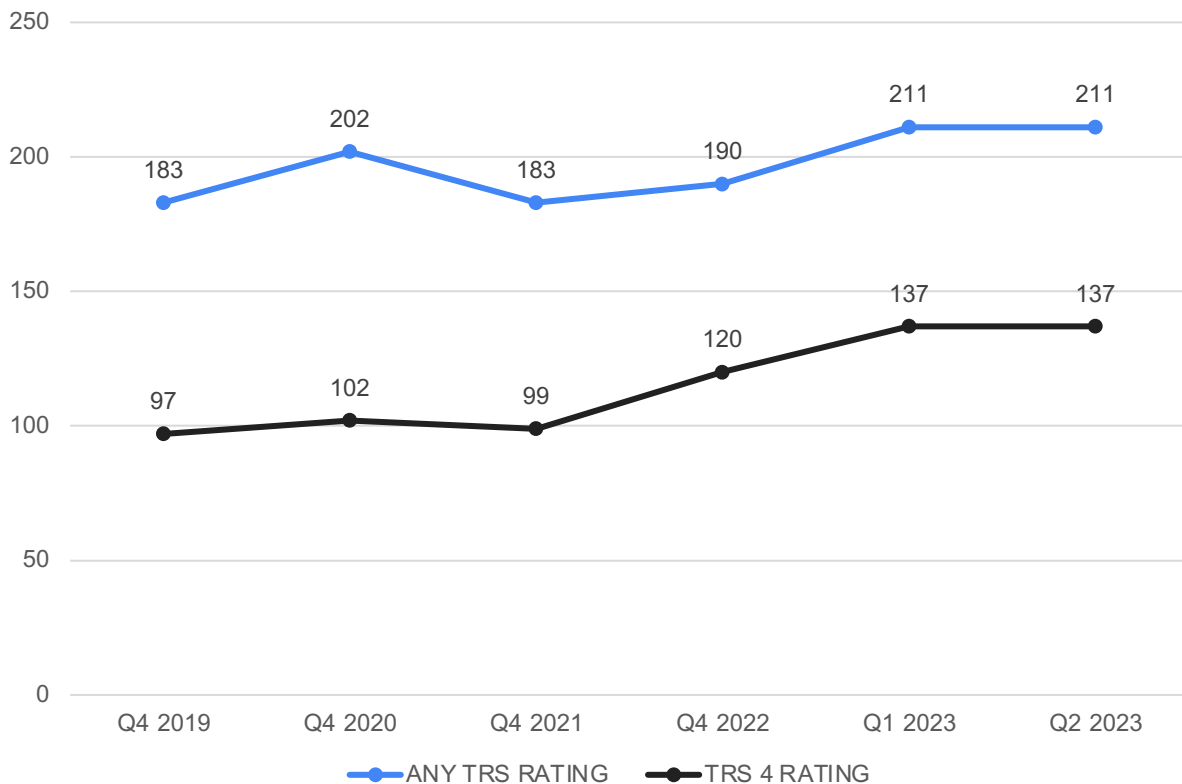
The percent of child care programs with a quality rating has increased since the end of 2019 and remained similar for the first 2 quarters of 2023.

Neighborhoods with evenly distributed racial/ethnic populations and high Asian populations continue to have the lowest percentage of child care programs with quality ratings.

NOTES: Quality ratings include TRS, NAEYC, NAC, and AMS or AMI Certification.
Neighborhoods with >8% Asian population are not mutually exclusive with other neighborhood race/ethnicity categories.

06 Quality Care & Education (cont.)

NUMBER OF ALL ELIGIBLE TARRANT COUNTY PROGRAMS WITH A TRS RATING (Q1 and Q2 2023 and 4 Prior Years)



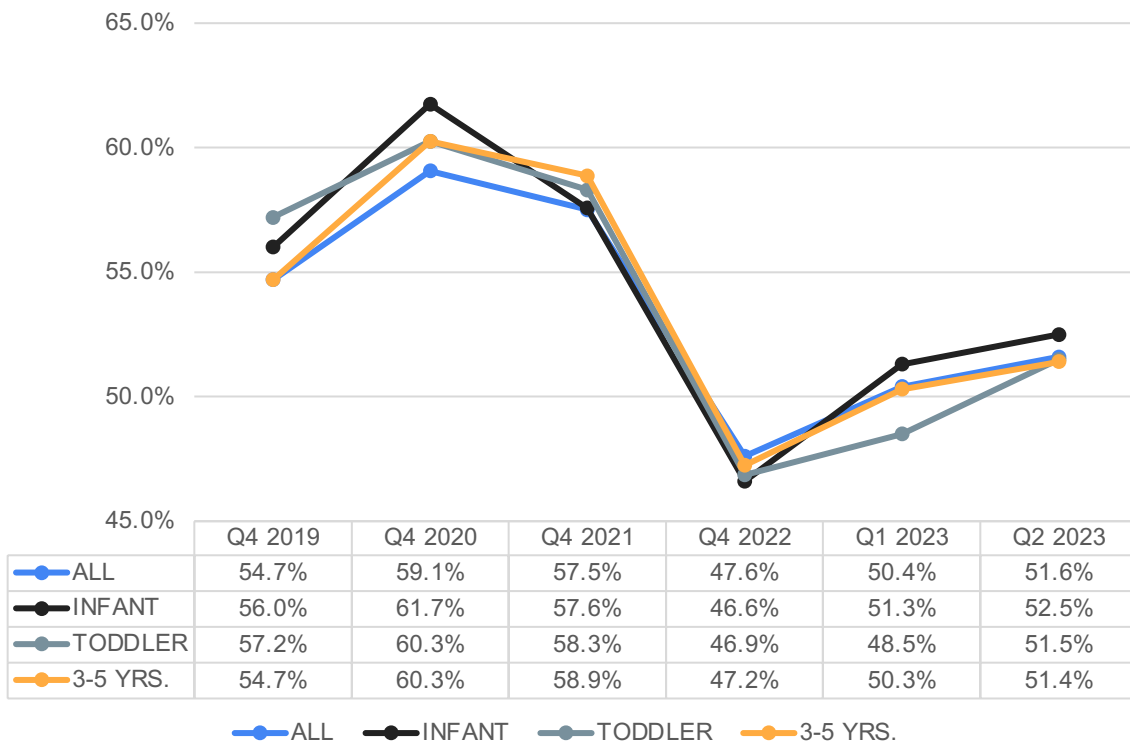
The number of eligible Tarrant County programs with a TRS rating *and* the number with a rating of 4 has increased since the end of 2019 and remained steady for Q1 and Q2 2023.

NOTES: Data can be disaggregated by child care program setting upon request.

Quality Care & Education (cont.)

07

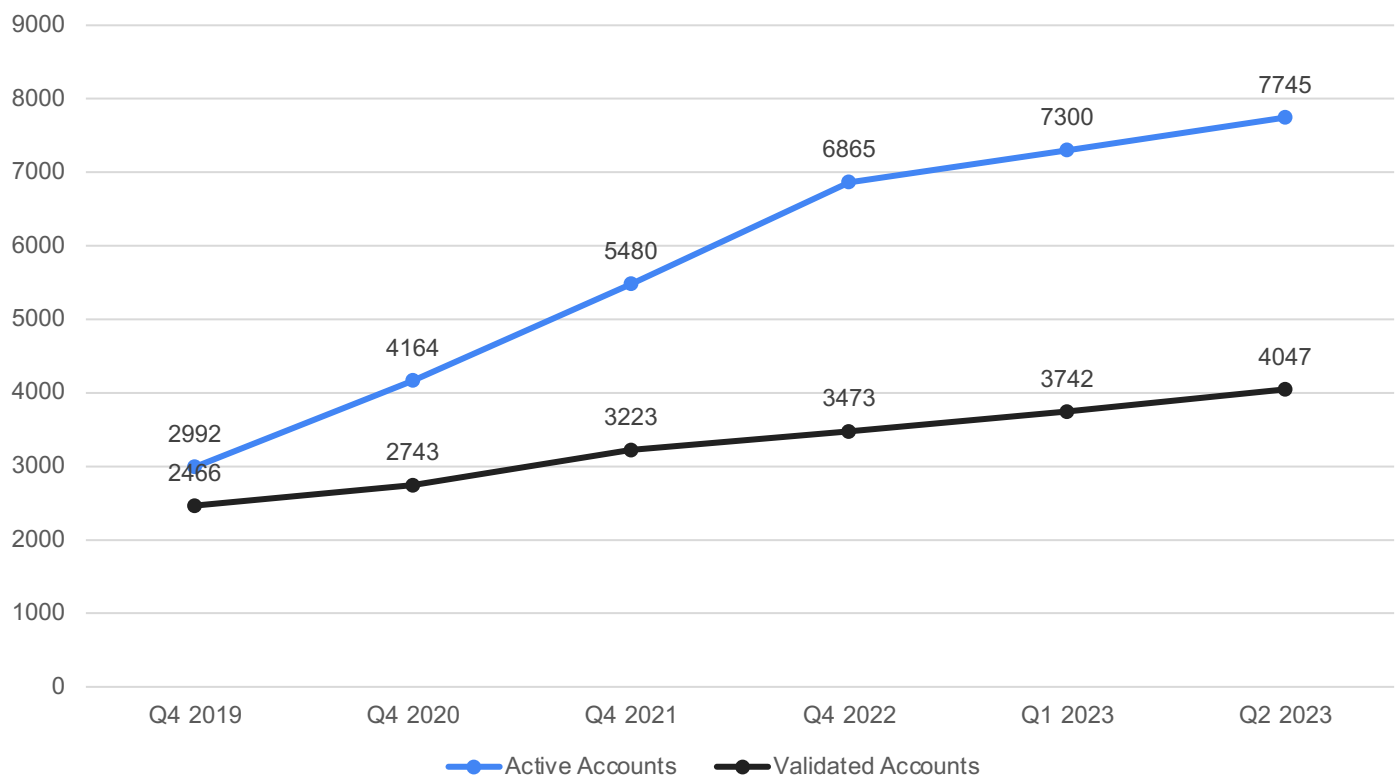
PERCENT OF CCMS SCHOLARSHIP CHILDREN IN TARRANT COUNTY ENROLLED IN A PROGRAM WITH TRS RATING (Q1 and Q2 2023 and 4 Prior Years)



Approximately half of children who utilize a CCMS scholarship are enrolled in a TRS program, reflecting a steady increase since a sharp decline in 2022.

08 Workforce Registry

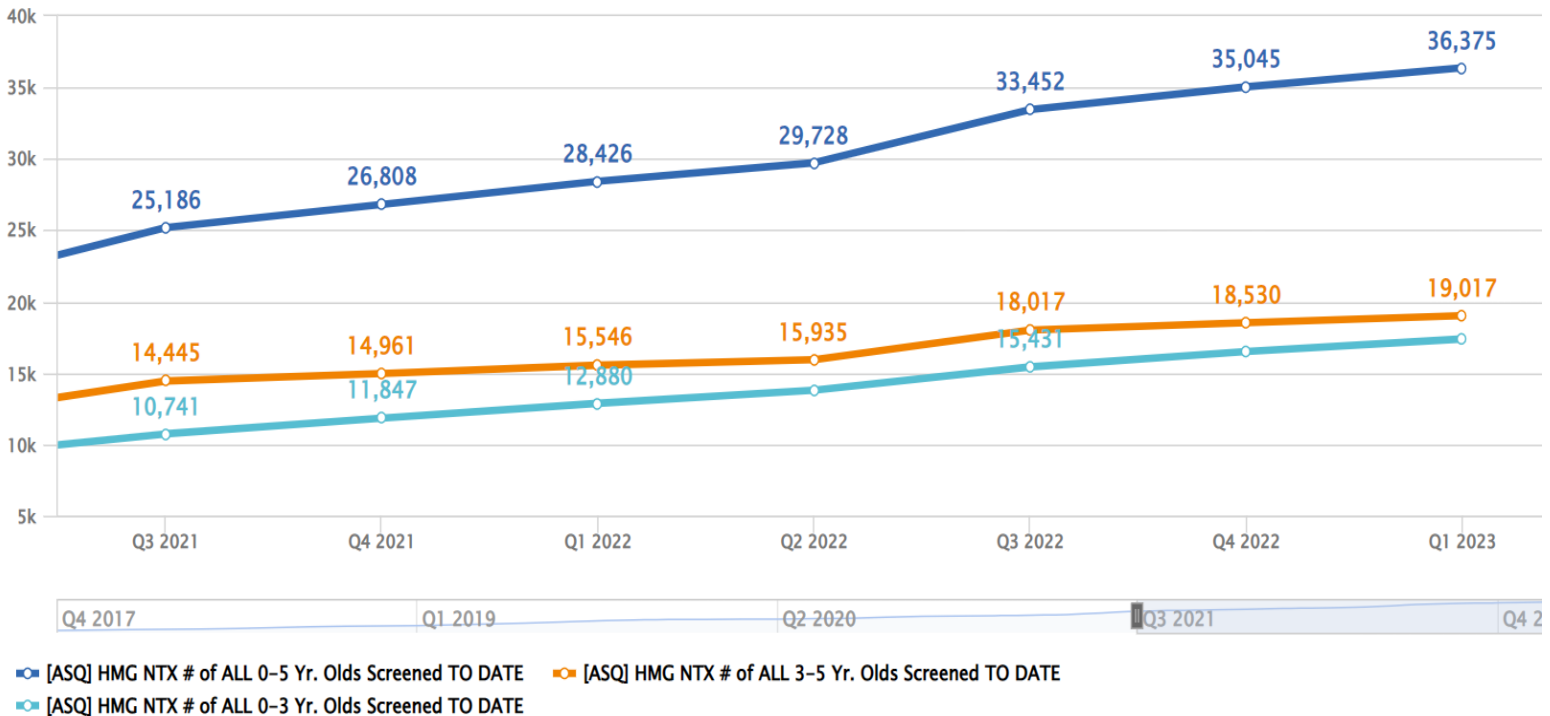
NUMBER OF ACTIVE AND VALIDATED REGISTRY USERS IN TARRANT COUNTY (Q1 and Q2 2023 and 4 Prior Years)



The number of early care and education professionals in Tarrant County with active and validated registry accounts continues to increase. Of note, 100% of TRS centers in Tarrant County are participating in the Registry.

Developmental Screenings 09

NUMBER OF TARRANT COUNTY CHILDREN SCREENED, BY AGE (Q3 2021-Q1 2023)

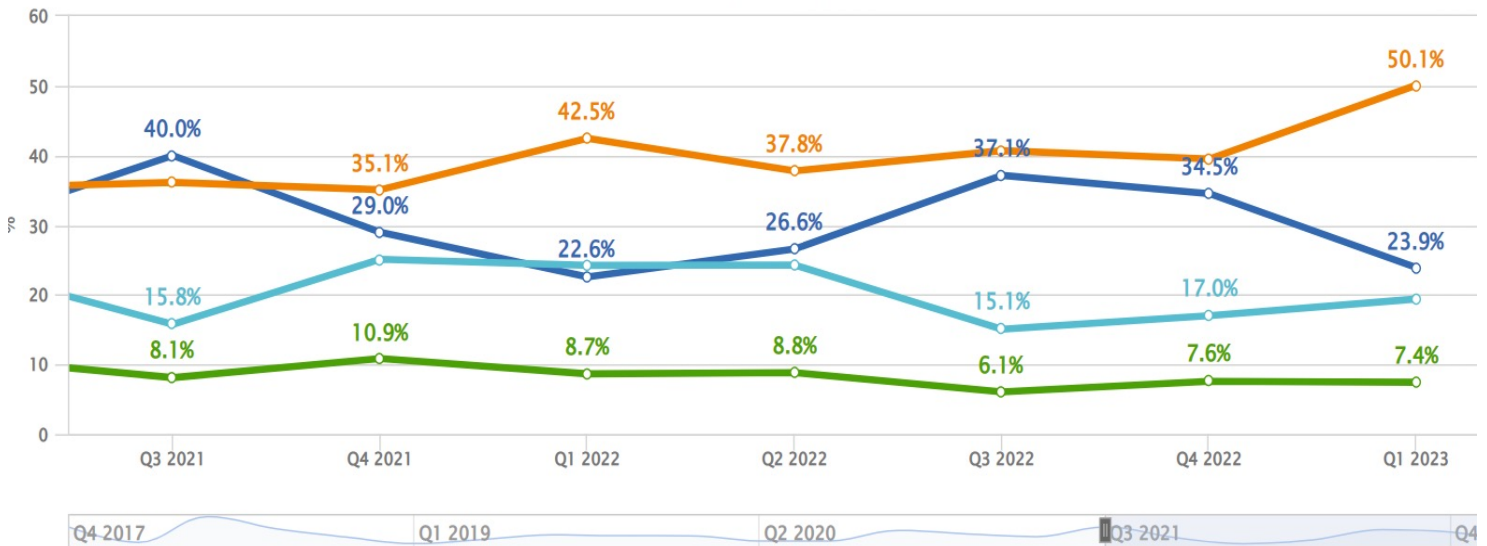


In partnership with Help Me Grow North Texas, ELA supports the increased use of developmental screening for earlier identification of developmental concerns.

- The number of developmental screenings continues to increase each quarter.
- Although more 3-5-year-olds receive developmental screenings, the increases are greater for 0-3-year-olds.

10 Developmental Screenings (cont.)

PERCENT OF TARRANT COUNTY 0-5 YEAR OLDS SCREENED, BY RACE/ETHNICITY (Q3 2021-Q1 2023)



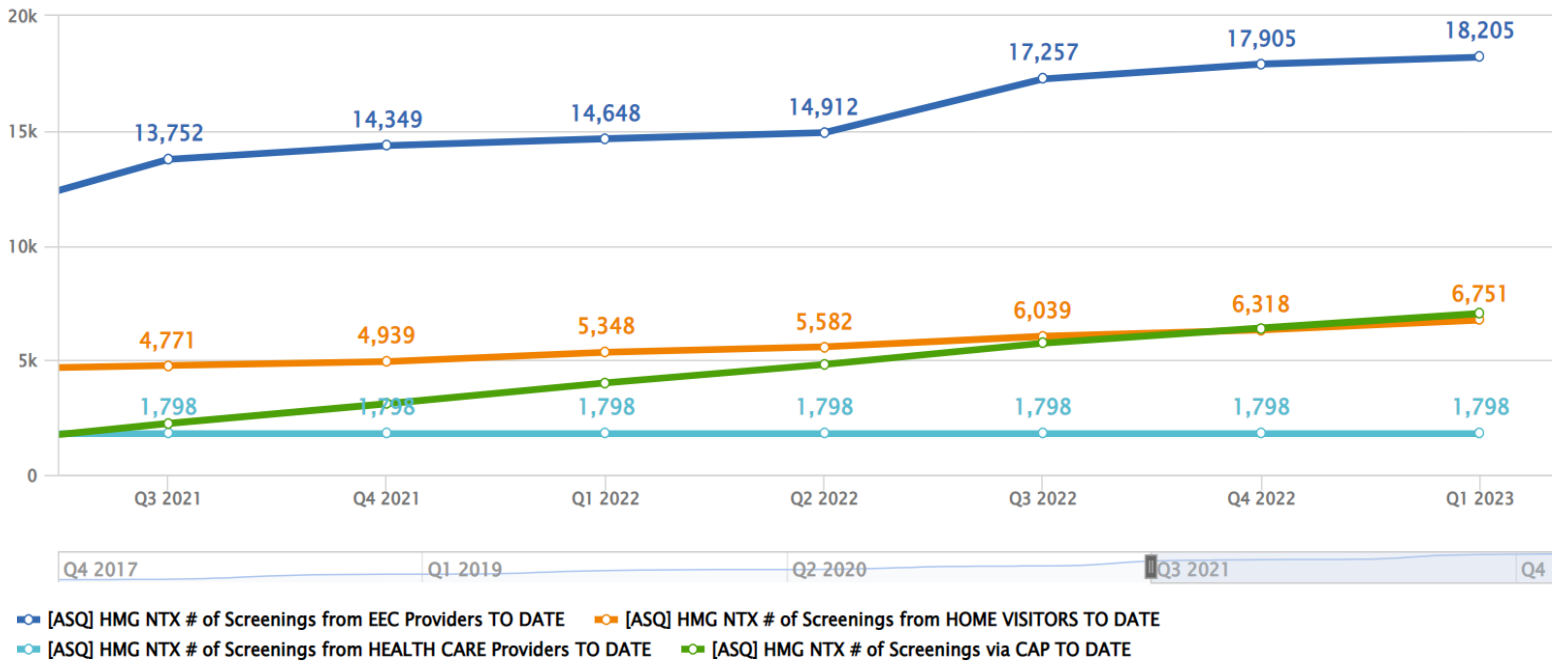
- [ASQ] HMG NTX % of AA 0-5 Year Olds Screened Each Quarter (of all HMG 0-5 yr olds screened)
- [ASQ] HMG NTX % of HISP 0-5 Year Olds Screened Each Quarter (of all HMG 0-5 yr olds screened)
- [ASQ] HMG NTX % of WHITE 0-5 Year Olds Screened Each Quarter (of all HMG 0-5 yr olds screened)
- [ASQ] HMG NTX % of MULTI/UNK 0-5 Year Olds Screened Each Quarter (of all HMG 0-5 yr olds screened)
- [ASQ] HMG NTX % of ASIAN 0-5 Year Olds Screened Each Quarter

Each year, the highest percentage of children screened are Black or Hispanic.

Developmental Screenings (cont.)

11

NUMBER OF DEVELOPMENTAL SCREENINGS CONDUCTED FROM DIFFERENT SOURCES (Q3 2021-Q1 2023)

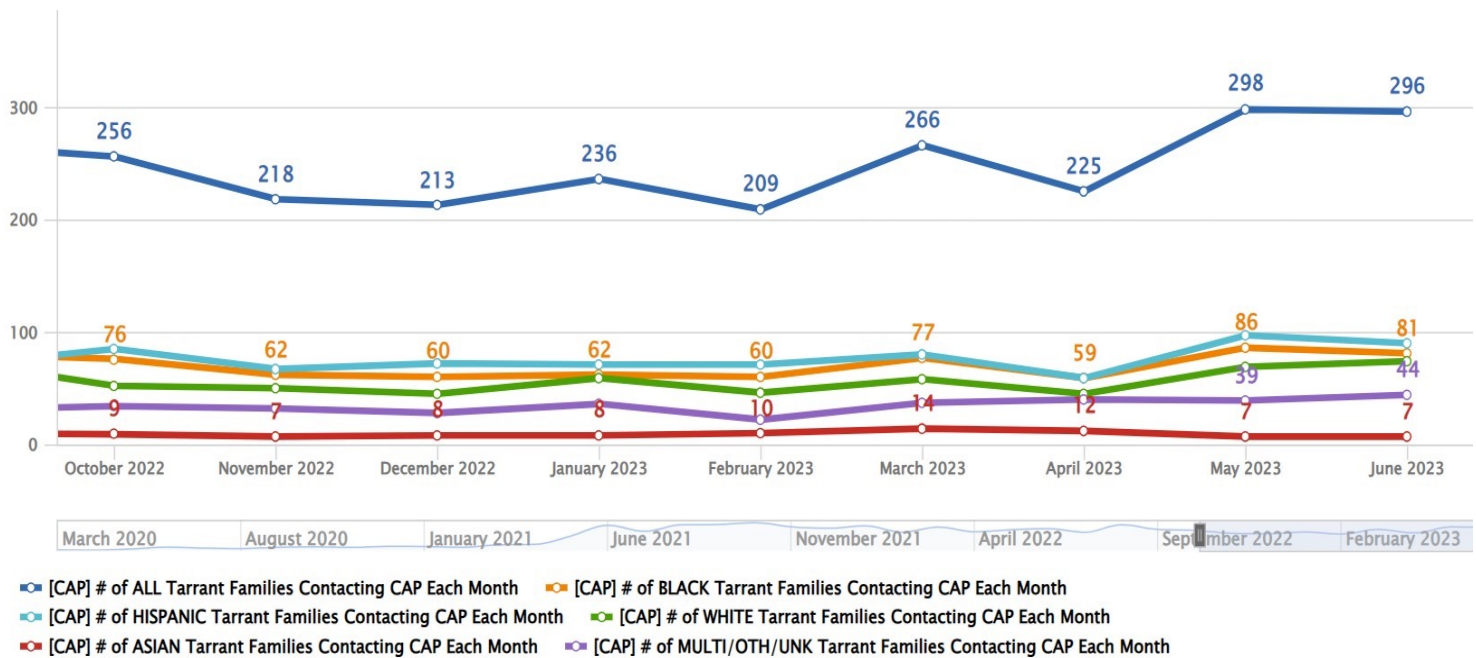


Early Education and Care Programs continue to be a primary source of developmental screenings in Tarrant County.

NOTES: The number of screenings from health care providers is likely underestimated due to difficulty accessing the data.

12 Central Access Point (CAP)

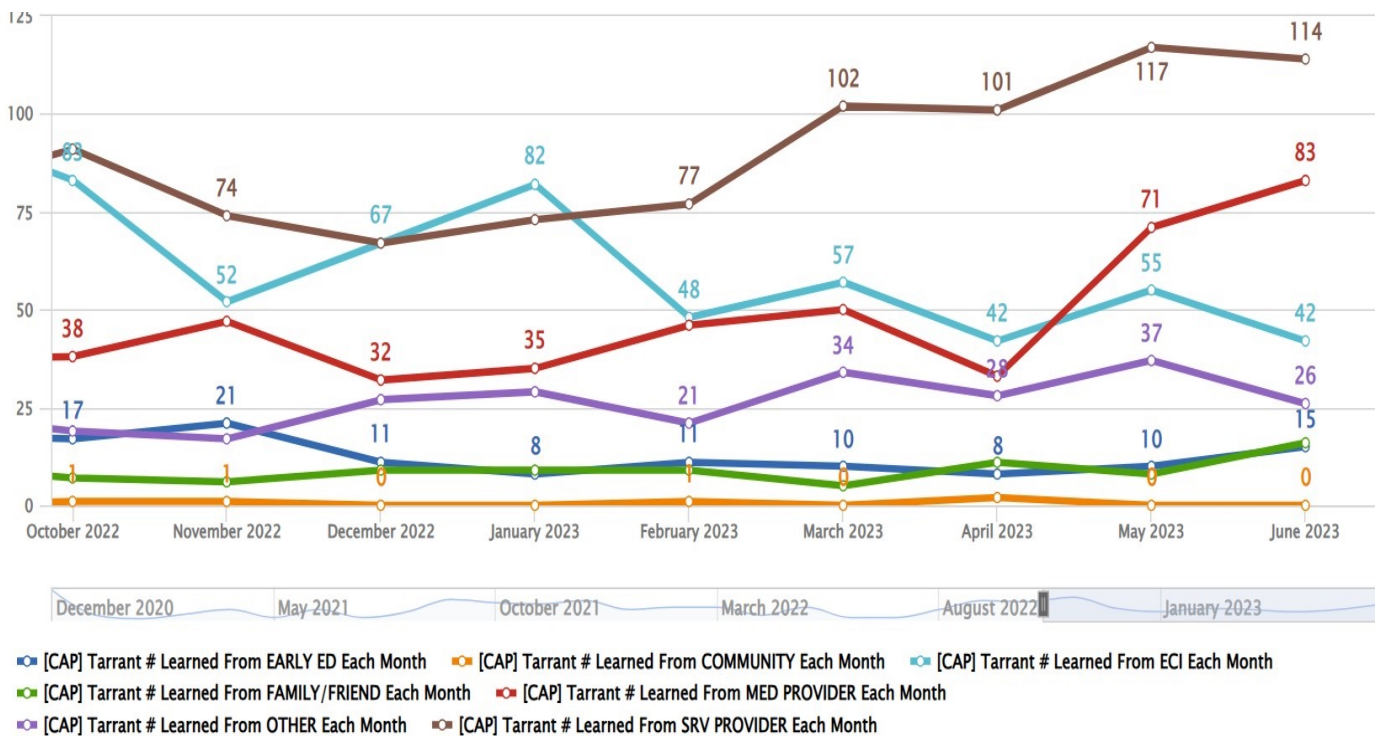
NUMBER OF TARRANT COUNTY FAMILIES ENROLLED IN THE CAP FINDCONNECT SYSTEM BY RACE (Monthly Since Sept. 2022)



ELA also supports the HMG-NTX Call Center (CAP), designed to link families to services for their children.

- The number of families contacting CAP increased between April and June 2023.
- The majority of families contacting CAP continue to be Black or Hispanic.

NUMBER OF FAMILIES THAT LEARN ABOUT THE HMG CALL CENTER (CAP) FROM DIFFERENT SOURCES (Monthly Since Oct. 2022)



- Tarrant County families continue to learn about the HMG-NTX call center primarily from their service provider.
- The number of families who learned about the call center from their medical provider is increasing, surpassing ECI as the second most frequent source from which families are learning about the call center.



EARLY LEARNING
— ALLIANCE —